



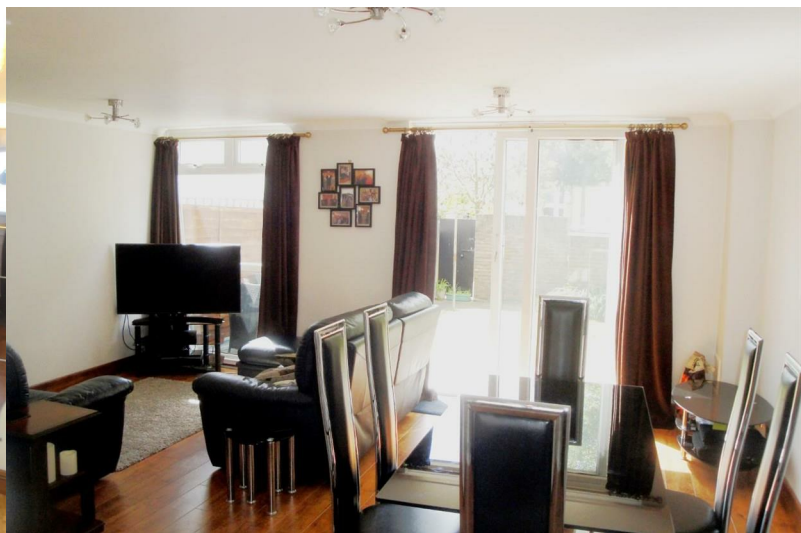
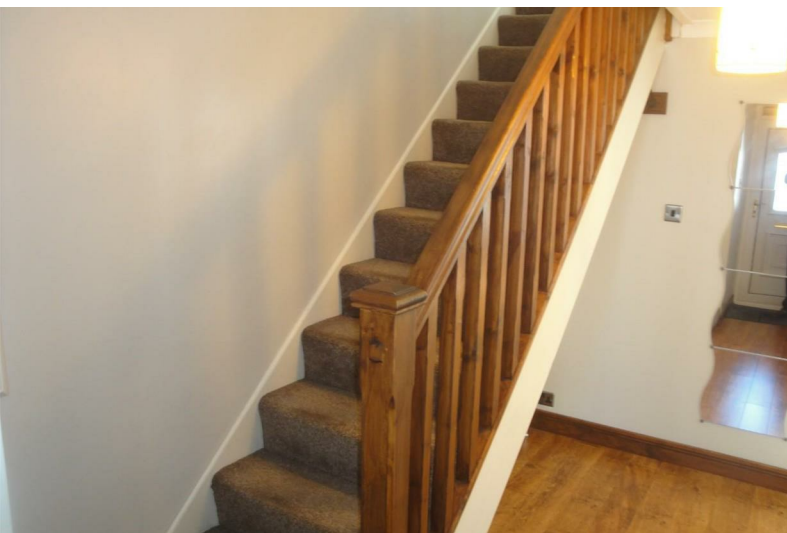
**DWELLING SOLUTIONS**  
PROPERTY CONSULTANTS



## Okehampton Square

Romford, Romford, RM3 8YA

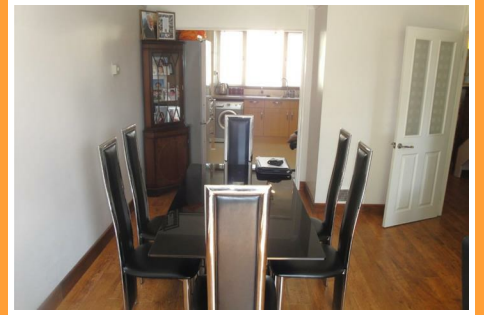
**£1,900 PCM**

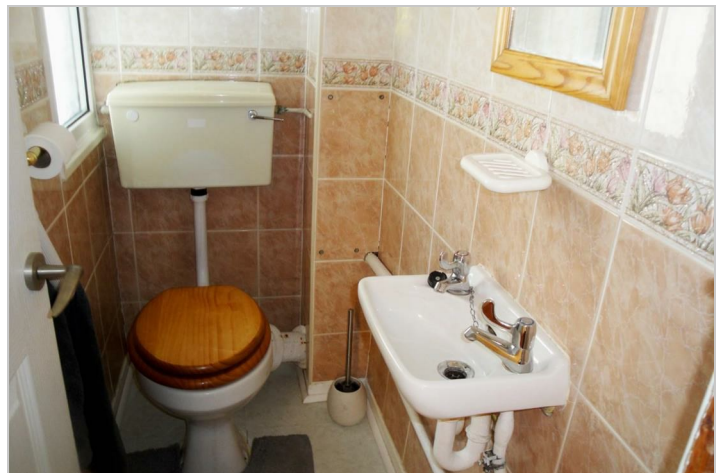


# Okehampton Square

Romford, Romford, RM3 8YA

**£1,900 PCM**





## Road Map



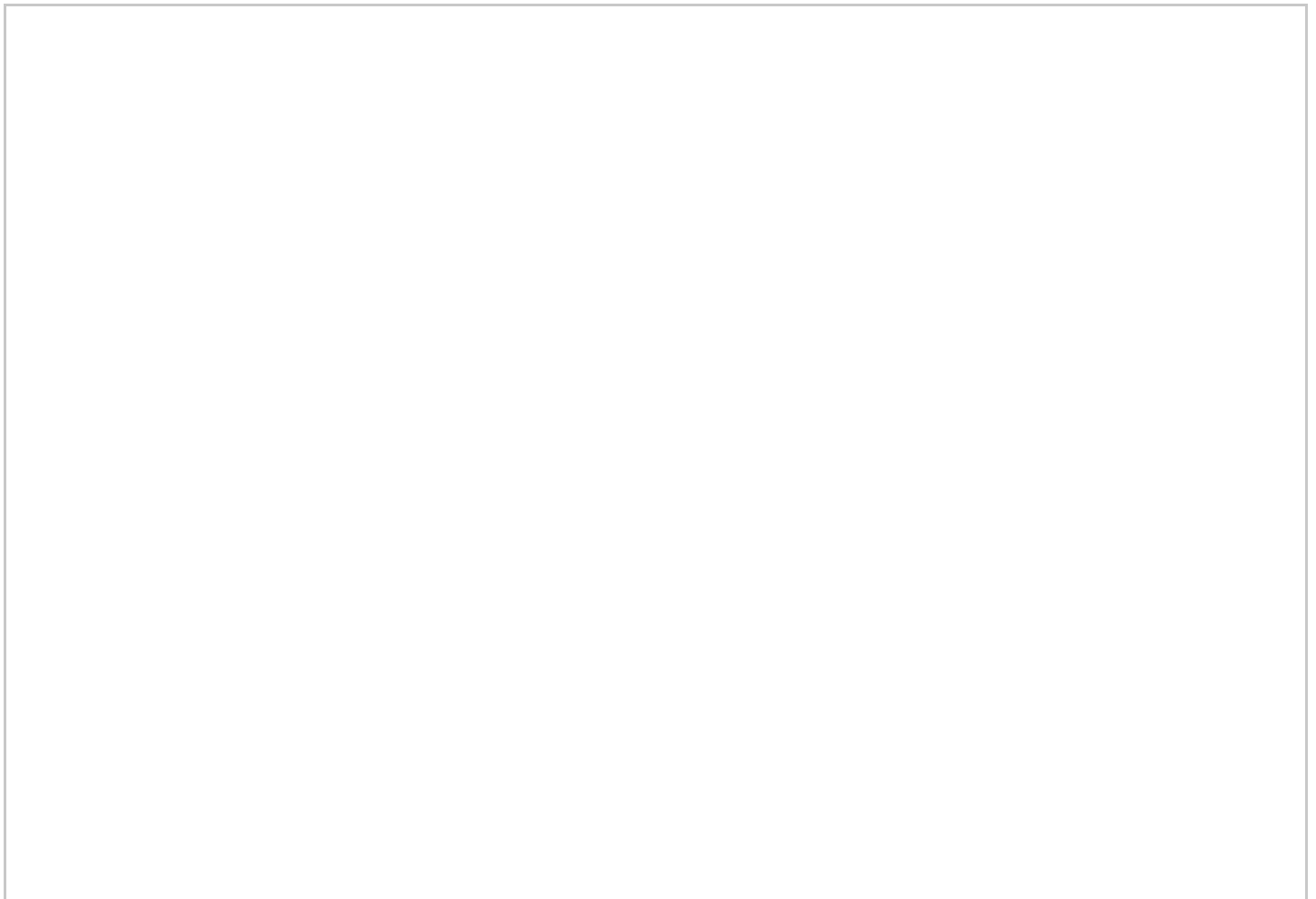
## Hybrid Map



## Terrain Map



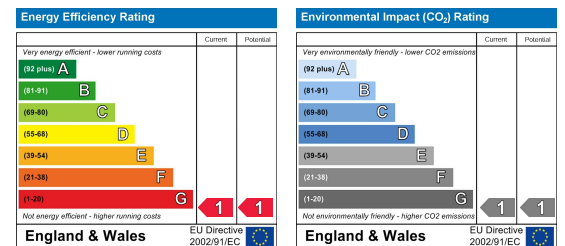
## Floor Plan



## Viewing

Please contact our Dwelling Solutions Ltd Office on 0208 597 9176 if you wish to arrange a viewing appointment for this property or require further information.

## Energy Efficiency Graph



These particulars, whilst believed to be accurate are set out as a general outline only for guidance and do not constitute any part of an offer or contract. Intending purchasers should not rely on them as statements of representation of fact, but must satisfy themselves by inspection or otherwise as to their accuracy. No person in this firm's employment has the authority to make or give any representation or warranty in respect of the property.